

COUNCIL AGENDA: NOVEMBER 5, 2013

**SUBJECT:** INVEST FROM THE GROUND UP GRANT AWARD

**SOURCE:** PARKS AND LEISURE SERVICES DEPARTMENT

**COMMENT:** Invest From the Ground Up (IFGU) Community Tree Planting, sponsored by Cal Fire and U.S. Forest Service Urban and U.S. Community Forestry Program, is a regional planting and education program led by California Urban Forests Council and the Western Chapter of the International Society of Arboriculture. IFGU will be organizing, training, and equipping selected tree planting partners across the San Francisco Bay Area and the Southern San Joaquin Valley to plant thousands of trees all in one day, February 15, 2014. IFGU will also be learning from partners, teaching the community about tree care, and sharing new knowledge about trees in our communities.

Parks and Leisure Services Department was awarded a grant on October 18, 2013, from the California Urban Forests Council Invest From the Ground Up Community Tree Planting Program. Many of the state's communities experience a significant deficit in tree canopy cover and the associated services and benefits delivered by trees. IFGU's goal with this program is to help address those deficits through tree planting and education and create healthier communities.

The grant award was for 30 trees to be planted along the Tule River Parkway. The types of 15 gallon trees that will be planted include: Southern Live Oaks, Holly Oaks, London Plane, Valley Oaks and Cork Oaks. Tree stakes and ties will also be provided from the grant.

Project partners for this community event will include members of the Porterville Youth Commission, PUSD Pathways students, and the Porterville Breakfast Lions Club.

**RECOMMENDATION:** Informational report only.

**ATTACHMENT:** Site map

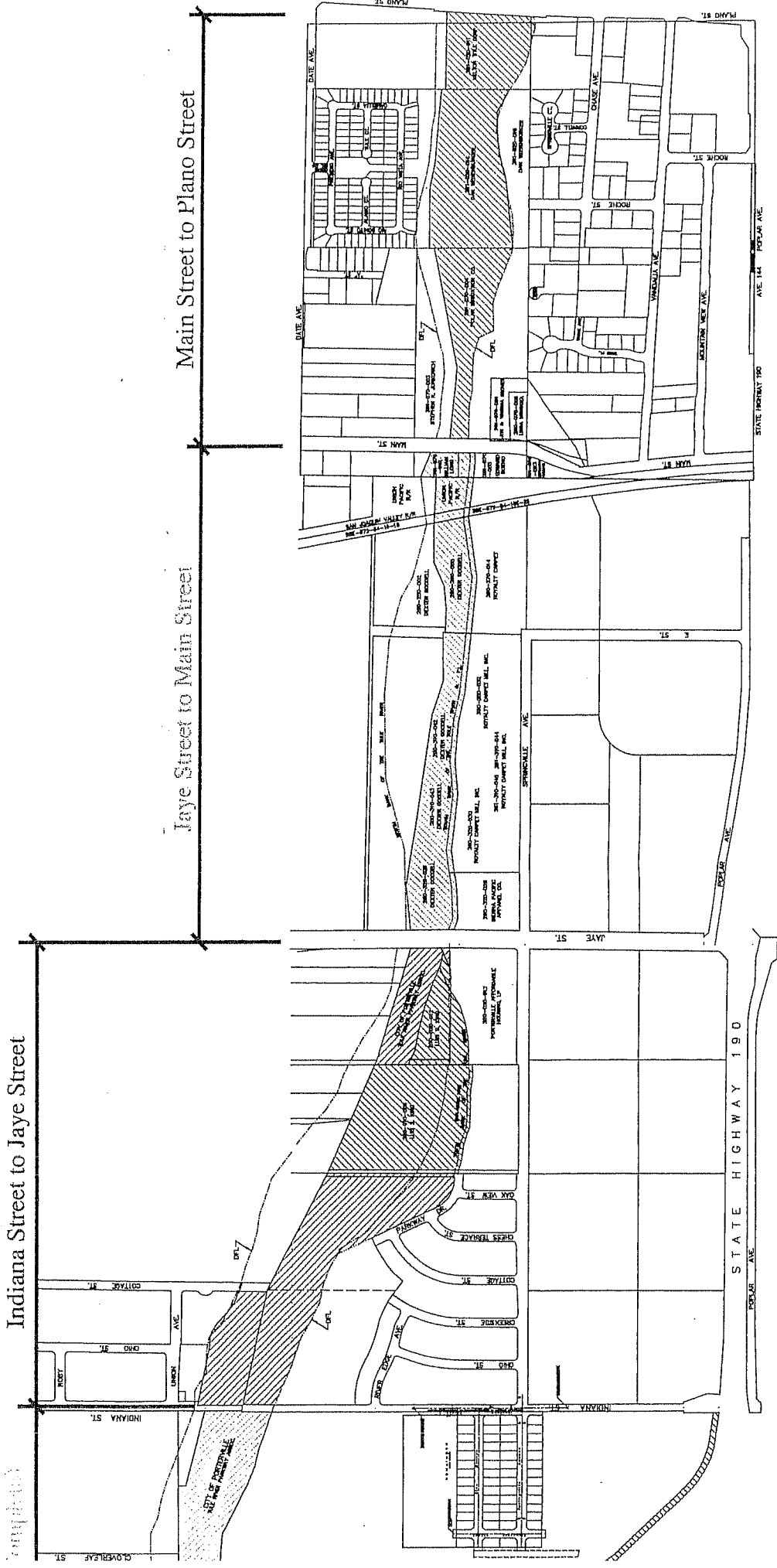
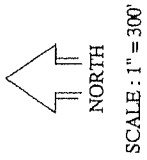
DS Director

MB Appropriated/Funded

J City Manager

Report No.: II-6

# TULE RIVER PARKWAY PHASING MAP



City of Jaye  
City Engineer  
and Wayne  
City Engineer